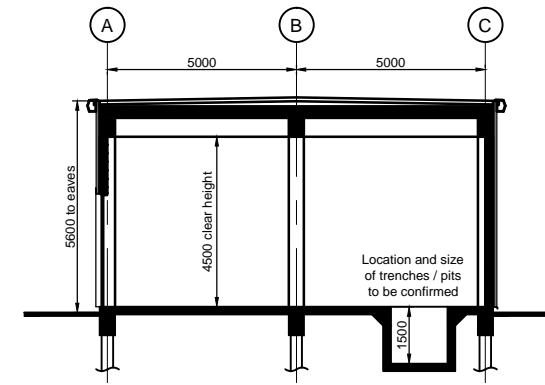
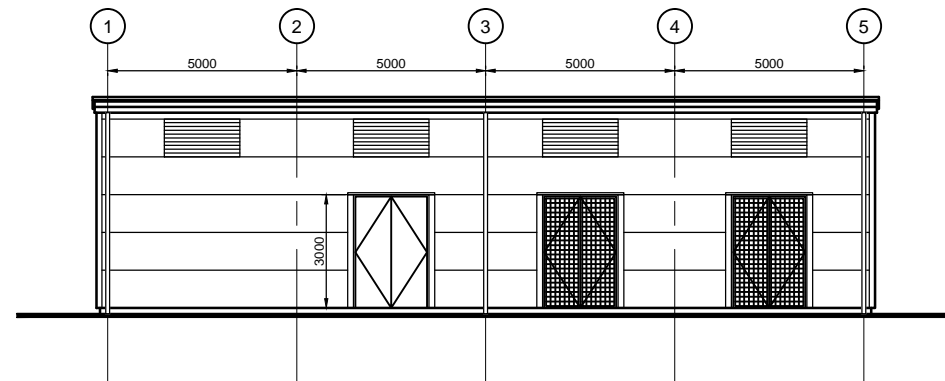


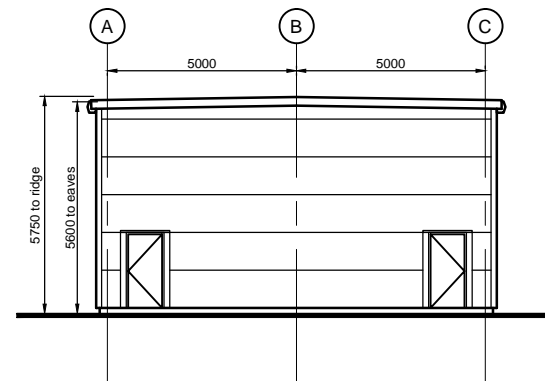
PLAN



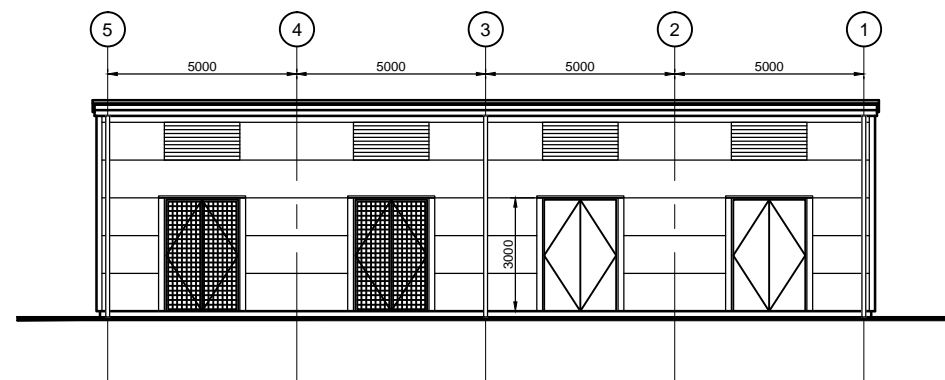
TYPICAL CROSS SECTION



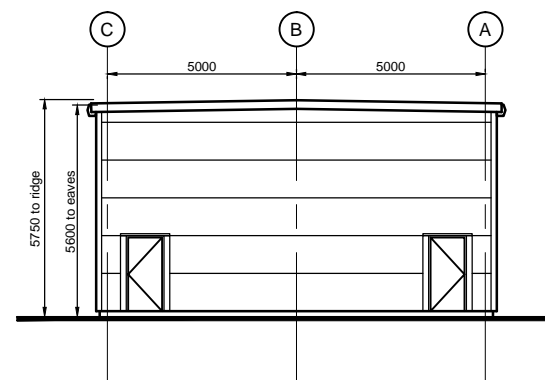
SOUTH ELEVATION



WEST ELEVATION



NORTH ELEVATION



EAST ELEVATION

NOTES

- General construction**
Reinforced concrete columns and beams on gridlines.
Dense concrete block walls between columns at perimeter and as required internally.
In-situ reinforced concrete slab to roof.
 - Roof finish**
Screed laid to falls (1 in 60)
Rigid insulation
High performance bitumen felt - colour grey
 - Rainwater Goods**
Box gutter and rainwater pipes to be pre-formed HPS200 Ultra colour coated steel.
Colour Anthracite Grey RAL 7016
Verge cladding to match.
 - Wall Cladding**
Kingspan composite louvre insulated architectural panel cladding system type KS1000LV, horizontally laid.
Colour Onyx (Anthracite Grey RAL 7016)
 - Personnel doors**
Aluminium framed, polyester powder coated, proprietary plain doors.
Colour Dusty Grey RAL 7037
 - Plant room doors**
Aluminium framed, polyester powder coated, proprietary plain doors.
Colour Dusty Grey RAL 7037
 - Plant room ventilation doors**
Galvanised steel frames and open grille door leaves to allow natural cross ventilation to transformer and HV switch rooms.
 - Louvers**
Miscellaneous louvers as required, to match profile and colour of wall cladding.
- FOR PERMANENT COMPOUND LAYOUT AND LOCATION OF SUBSTATION BUILDING REFER TO PB1586-SK1028 AND PB1586-SK1029

REV	DATE	DESCRIPTION	BY	CHK	APP
C	11.03.15	MINOR REVISIONS	LW	DGB	MH
B	09.03.15	ISSUED FOR INFORMATION	TF	DGB	MH
A	20.02.15	ISSUED FOR INFORMATION	LW	DGB	MH

REVISIONS

PROJECT
YORK POTASH

TITLE
THE YORK POTASH HARBOUR FACILITIES ORDER 201X SUBSTATION ELEVATIONS SITES A & C REGULATIONS 5 (2)(a) DOCUMENT 3.6B

HASKONINGDHV UK LTD
MARITIME & WATERWAYS
Marborough House
Marborough Crescent
Newcastle upon Tyne NE1 4EE
+44 (0) 191 211 1300 Telephone
+44 (0) 191 211 1313 Fax
info@newcastle.yorkpotashhaskoning.com E-mail
www.yorkpotashhaskoning.com Internet

DRAWN	LW	CHECKED	DGB	PASSED	MH
DATE	FEB'15	CLIENT'S REF.			
SCALE AT A3	1:200	AUTOCAD REF.	PB1586-SK1029		

DRAWING No. **PB1586-SK1029** REVISION **C**